





## Penrith's Newest Luxury Haven

Welcome to Omega, Penrith area's newest luxury apartment complex.

This is an opportunity to secure your very own dynamic and exciting lifestyle, with close access to all transport, outdoor, education and healthcare amenities.

Omega offers impressive 1, 2 or 3 bedroom apartments with versatile open floor plans and modern quality designer inclusions.

# An Opportune Location

Omega is at the centre of all the conveniences and luxuries the booming Penrith area has to offer.

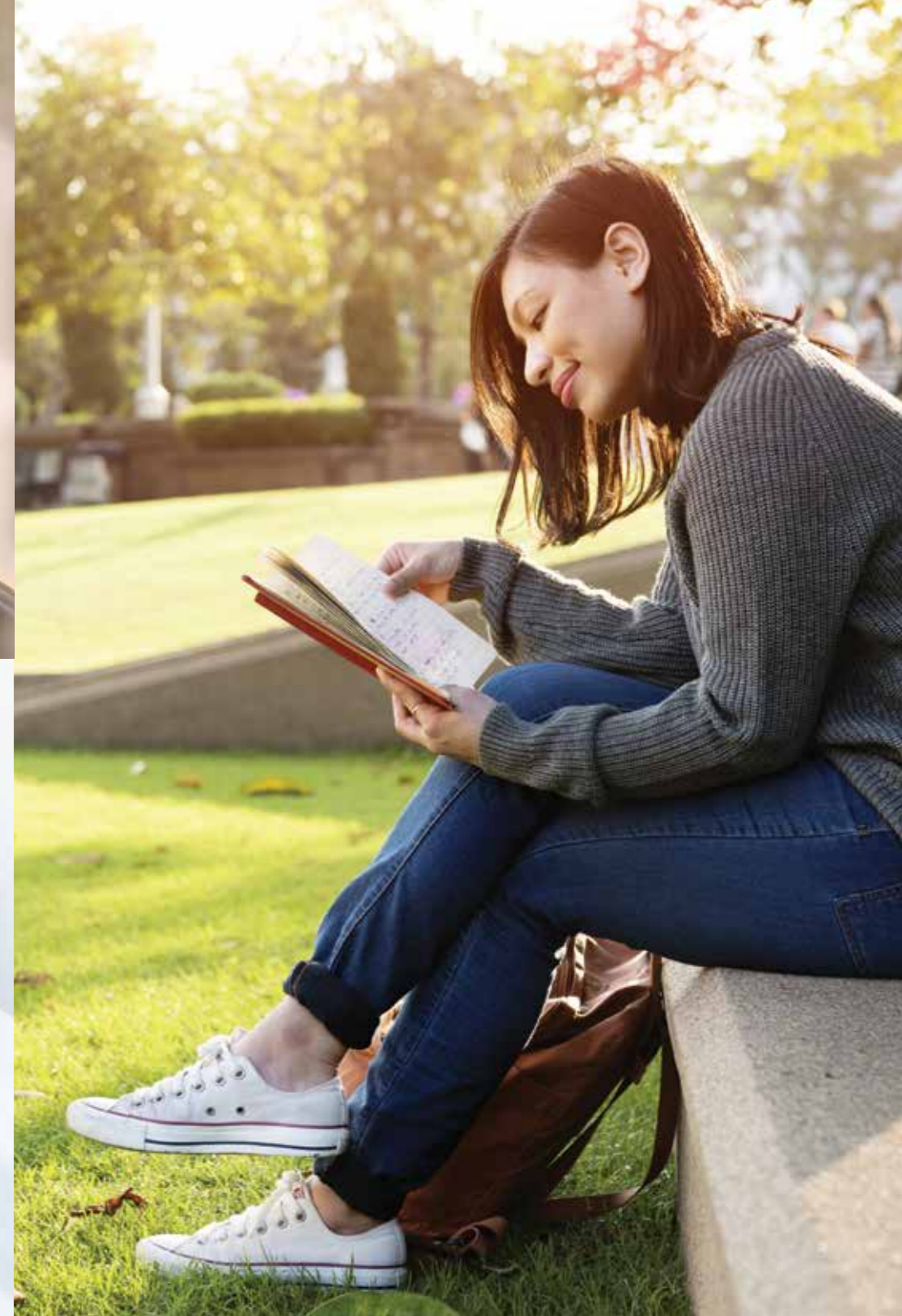
Close access to Nepean Public and Private Hospitals. Approximately 1km to Kingswood Train Station and 2.5km to Penrith Train Station with access to fast trains to the Sydney CBD. A short walk to the Western Sydney University, local Primary and High Schools. A short walk to Penrith CBD with local restaurants, retail and Westfield Shopping Centre. Many parks and green areas within walking distance. Close proximity to M4 entrance and exit. A short drive to the beautiful recreational facilities of the Nepean River, whitewater stadium, and the Sydney International Regatta Centre, with the Blue Mountains at your doorstep.





## Perfectly Located

- 1. Omega Apartments
- 2. Nepean Hospital
- 3. Kingswood Train Station
- 4. Penrith High School
- 5. Western Sydney University
- 6. Kingswood High School
- 7. Chapman Gardens Park



# Penrith, A Wise Investment

The future for the Penrith area is bright. With an expanding population and growing investment in local facilities, there has never been a better time to buy.

The rapidly developing business hubs of Western Sydney, Badgerys Creek Airport, South and Northwest Growth Centres are all within a 20km radius of Penrith CBD, providing great employment opportunities.

The Penrith area's healthcare and education facilities have been developed to service a large area including the Blue Mountains, ensuring quality world class service.



## **Affordable Investment With Solid Rental Return**

One of the most affordable areas in Sydney, the Penrith area is experiencing significant continued capital growth (up 17% in 2015). Strong rental growth can also be expected.



## **Boundless Employment Opportunities**

The Penrith area offers a broad range of employment opportunities, as well as being only a short distance from the business hubs of Western Sydney, Badgerys Creek Airport, South and Northwest Growth Centres.



## **Health & Education Hub**

As a strategically important Regional City, the Penrith area is home to a large number of world class Health and Education institutions, with future investment expected to generate 13,000 new jobs over the next 20 years.



## **Parklands & Outdoor Lifestyle**

The Penrith area's many public parks offer great opportunities to enjoy the outdoors with kids and pets, as well as the exciting proposed future development of the Penrith Lakes parklands. The Blue Mountains and Nepean River are also right at your doorstep.



## **Retail & Dining Options**

Over 1,000 retail shops and restaurants provide a dynamic and ever-evolving lifestyle for the residents of the Penrith area, as well as great opportunities for small business development.



## **Well Connected**

The Penrith area is well connected to the rest of Sydney with a major train interchange, as well as the future WestConnex creating easier road accessibility.

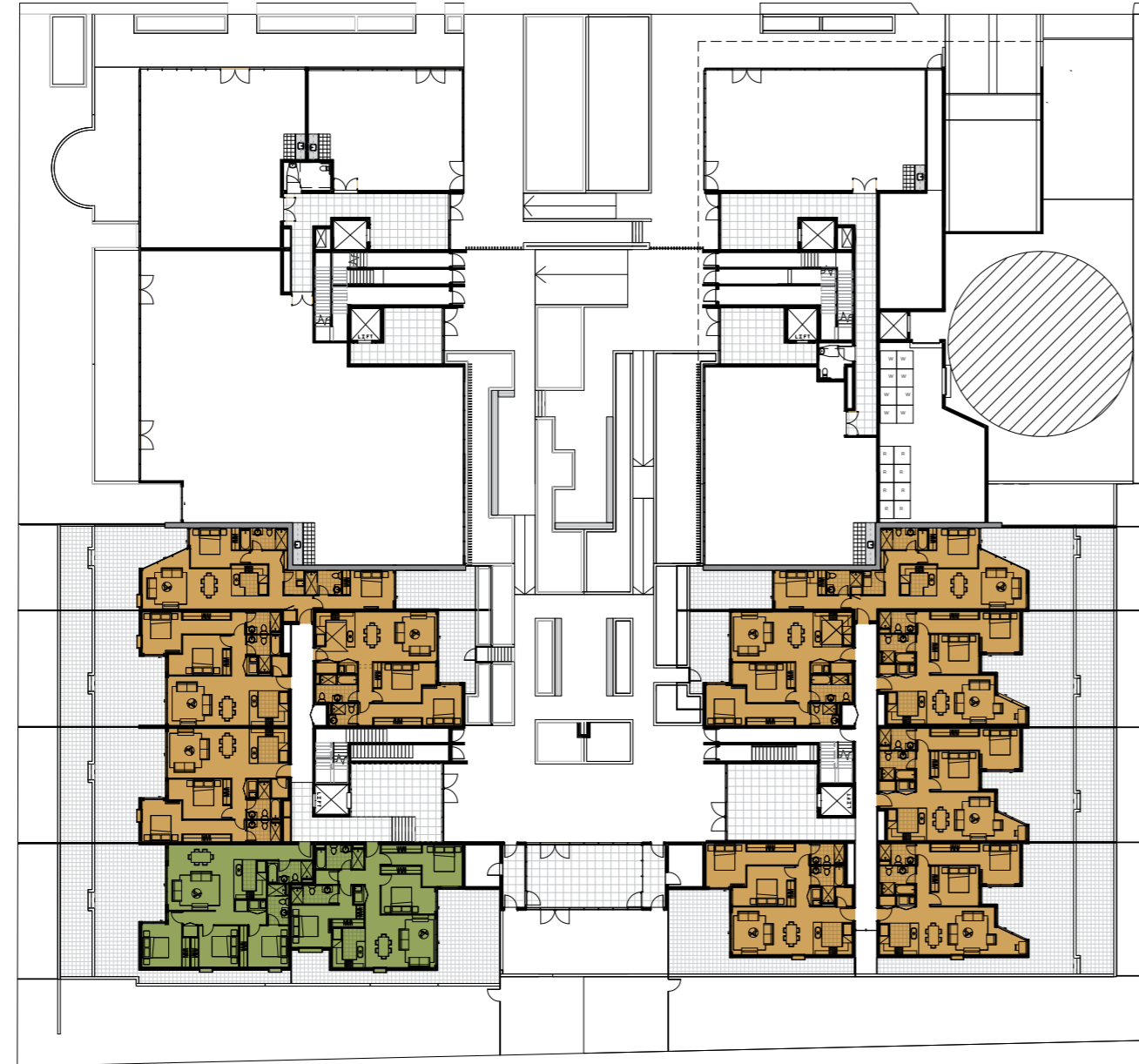
# Apartment features

- Gold or Platinum level apartments to choose from with schedules of finishes
- Versatile open floor plans
- Landscaped open areas for entertaining
- Storage areas
- Modern quality designer inclusions
- High speed elevators
- Air conditioning, fully ducted/split systems
- Audio/Video intercom providing secure access
- Provisions for pay TV
- Fresh new interior colour schemes
- Secure parking/visitor parking
- Garbage chutes available on all floors
- Energy efficient appliances
- NBN network





# Ground Floor



- One Bedroom
- Two Bedroom
- Three Bedroom

## Not to scale

Disclaimer: Whilst care has been taken in the preparation of this document, no representation is made or accepted by the Developer or other interested parties for the accuracy of completeness of the information presented. This material is indicative only and is not intended to be a true representation. Changes may be made during the development without notice. Loose furniture and white goods are not included. The material in this document has been prepared solely for information purposes and is not intended to form part of any contract or constitute an offer or invitation to the public. Interested parties should make and rely on their own independent enquiries.

# First Floor



- One Bedroom
- Two Bedroom
- Three Bedroom

## Not to scale

Disclaimer: Whilst care has been taken in the preparation of this document, no representation is made or accepted by the Developer or other interested parties for the accuracy of completeness of the information presented. This material is indicative only and is not intended to be a true representation. Changes may be made during the development without notice. Loose furniture and white goods are not included. The material in this document has been prepared solely for information purposes and is not intended to form part of any contract or constitute an offer or invitation to the public. Interested parties should make and rely on their own independent enquiries.



# Second Floor



- One Bedroom
- Two Bedroom
- Three Bedroom

### Not to scale

Disclaimer: Whilst care has been taken in the preparation of this document, no representation is made or accepted by the Developer or other interested parties for the accuracy of completeness of the information presented. This material is indicative only and is not intended to be a true representation. Changes may be made during the development without notice. Loose furniture and white goods are not included. The material in this document has been prepared solely for information purposes and is not intended to form part of any contract or constitute an offer or invitation to the public. Interested parties should make and rely on their own independent enquiries.

# Third Floor



- One Bedroom
- Two Bedroom
- Three Bedroom

### Not to scale

Disclaimer: Whilst care has been taken in the preparation of this document, no representation is made or accepted by the Developer or other interested parties for the accuracy of completeness of the information presented. This material is indicative only and is not intended to be a true representation. Changes may be made during the development without notice. Loose furniture and white goods are not included. The material in this document has been prepared solely for information purposes and is not intended to form part of any contract or constitute an offer or invitation to the public. Interested parties should make and rely on their own independent enquiries.

# Fourth Floor



- One Bedroom
- Two Bedroom
- Three Bedroom

## Not to scale

Disclaimer: Whilst care has been taken in the preparation of this document, no representation is made or accepted by the Developer or other interested parties for the accuracy or completeness of the information presented. This material is indicative only and is not intended to be a true representation. Changes may be made during the development without notice. Loose furniture and white goods are not included. The material in this document has been prepared solely for information purposes and is not intended to form part of any contract or constitute an offer or invitation to the public. Interested parties should make and rely on their own independent enquiries.

# Fifth Floor

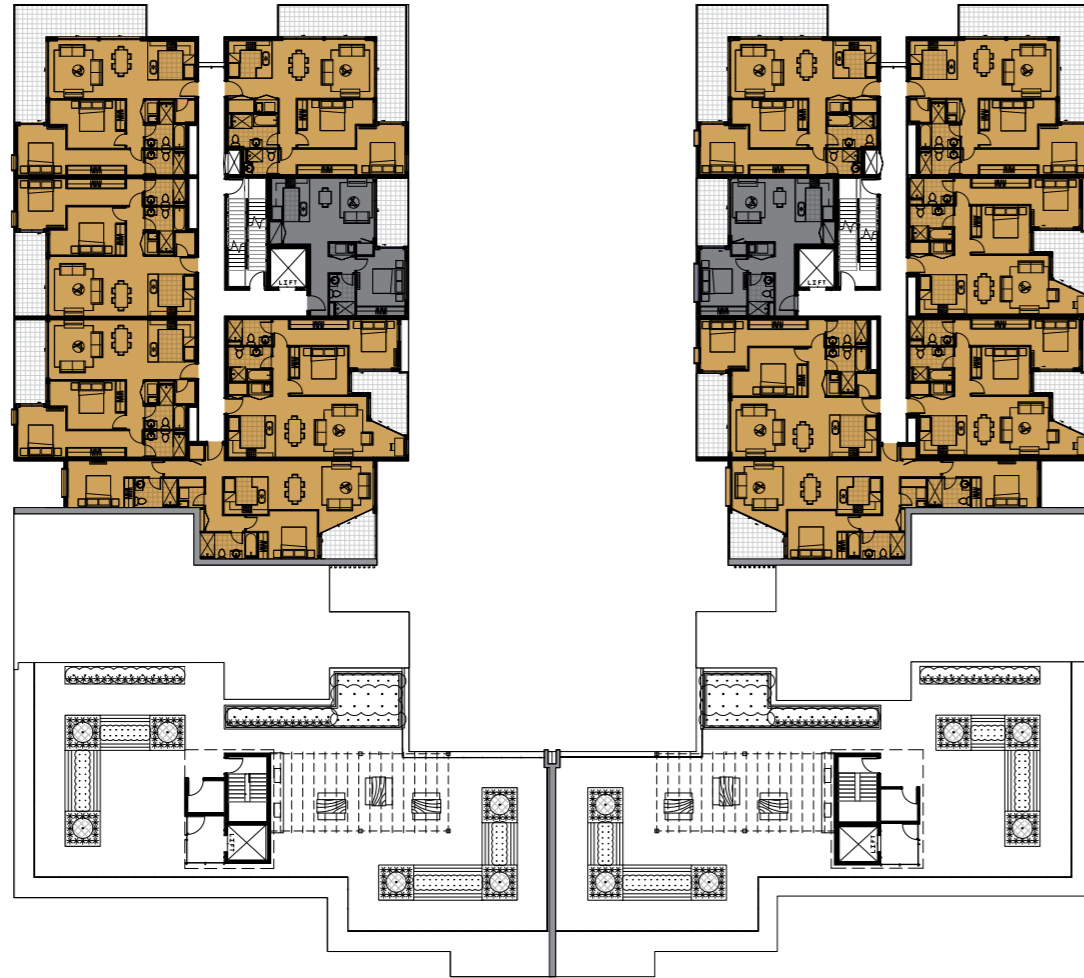


- One Bedroom
- Two Bedroom
- Three Bedroom

## Not to scale

Disclaimer: Whilst care has been taken in the preparation of this document, no representation is made or accepted by the Developer or other interested parties for the accuracy or completeness of the information presented. This material is indicative only and is not intended to be a true representation. Changes may be made during the development without notice. Loose furniture and white goods are not included. The material in this document has been prepared solely for information purposes and is not intended to form part of any contract or constitute an offer or invitation to the public. Interested parties should make and rely on their own independent enquiries.

# Sixth Floor



- One Bedroom
- Two Bedroom
- Three Bedroom

## Not to scale

Disclaimer: Whilst care has been taken in the preparation of this document, no representation is made or accepted by the Developer or other interested parties for the accuracy of completeness of the information presented. This material is indicative only and is not intended to be a true representation. Changes may be made during the development without notice. Loose furniture and white goods are not included. The material in this document has been prepared solely for information purposes and is not intended to form part of any contract or constitute an offer or invitation to the public. Interested parties should make and rely on their own independent enquiries.

# Seventh Floor



- One Bedroom
- Two Bedroom
- Three Bedroom

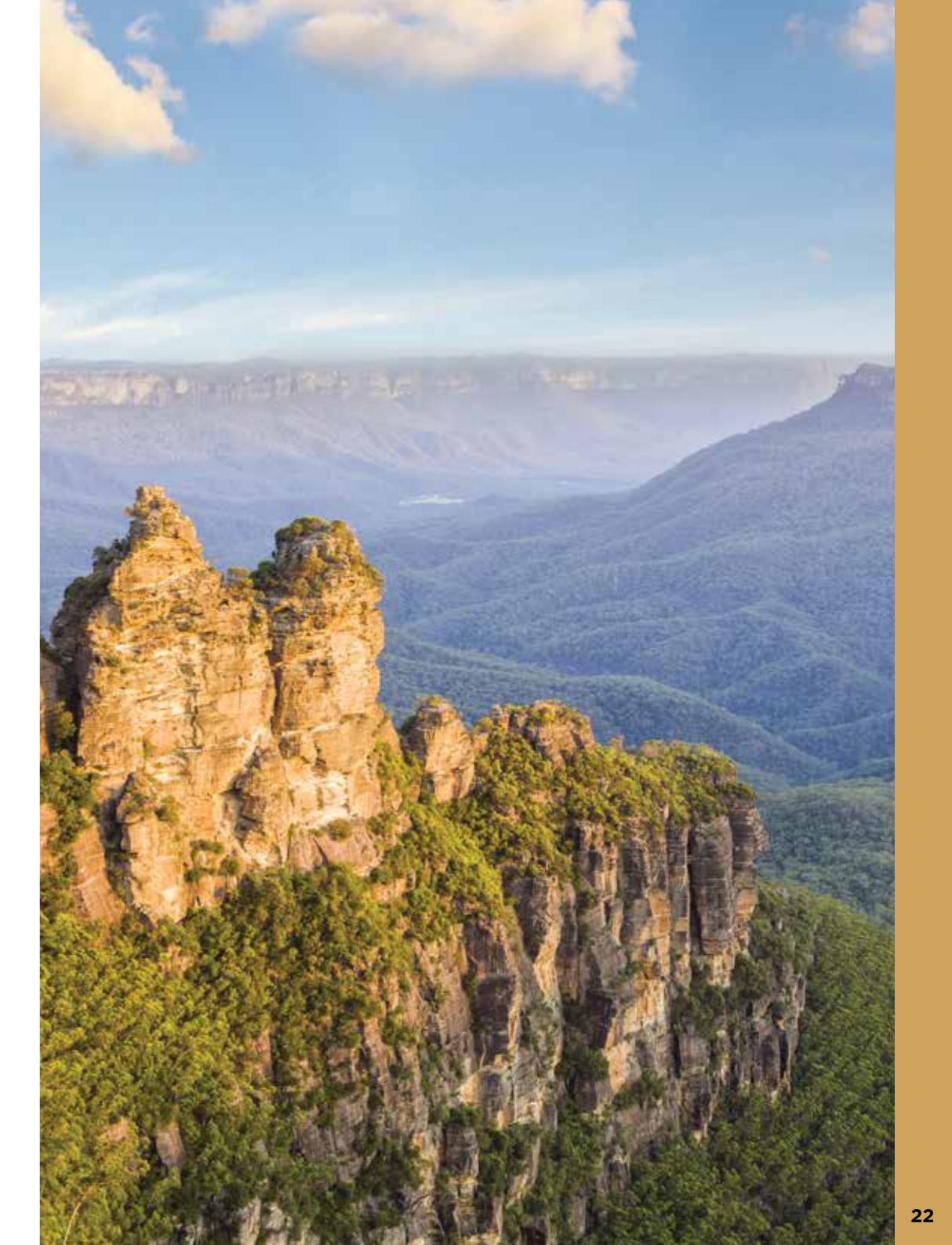
## Not to scale

Disclaimer: Whilst care has been taken in the preparation of this document, no representation is made or accepted by the Developer or other interested parties for the accuracy of completeness of the information presented. This material is indicative only and is not intended to be a true representation. Changes may be made during the development without notice. Loose furniture and white goods are not included. The material in this document has been prepared solely for information purposes and is not intended to form part of any contract or constitute an offer or invitation to the public. Interested parties should make and rely on their own independent enquiries.



## Your New Neighbourhood

1. Omega Apartments Site
2. Blue Mountains
3. Nepean Hospital
4. Penrith CBD
5. Penrith Train Station
6. Kingswood Train Station





[www.skyton.com.au](http://www.skyton.com.au)